

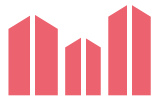
PANORAMA BUSINESS CENTER



Introduction

The Panorama Business Center is a compact and highly visible building which provides 6,800 sq m of modern office and retail space. It has 91 parking spaces and is easily accessible by public transport - the underground station Museum is within 200 m walking distance.

The asset is managed by REDSIDE investment fund.



6,800 sq m



WAULT 3.35 years



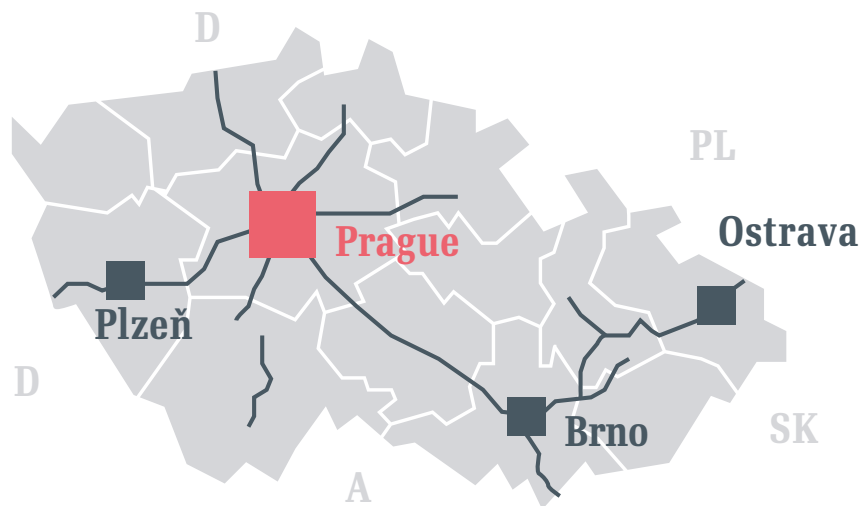
92.4 % leased



Location

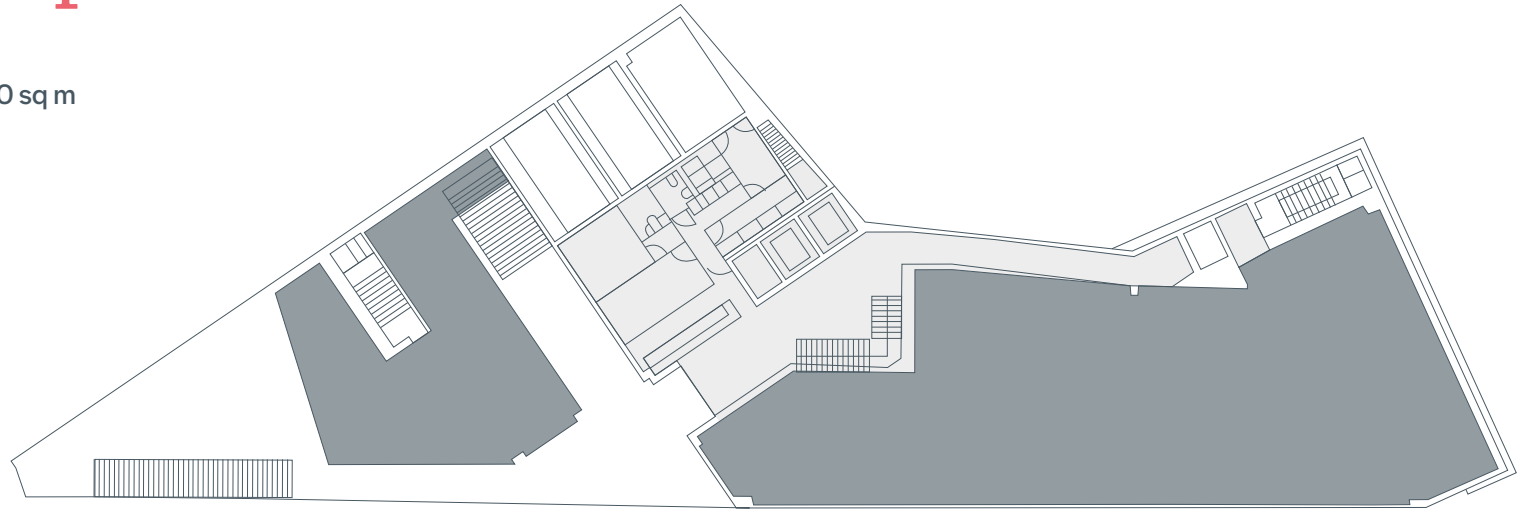
The Panorama Business Center is located on the main thoroughfare that runs between the central business district of Prague 1 and the prime residential district of Prague 2. The high footfall that passes the office building and its visibility from the main thoroughfare means that the attractive retail spaces are highly sought after by tenants offering financial and catering services.

Czech Republic



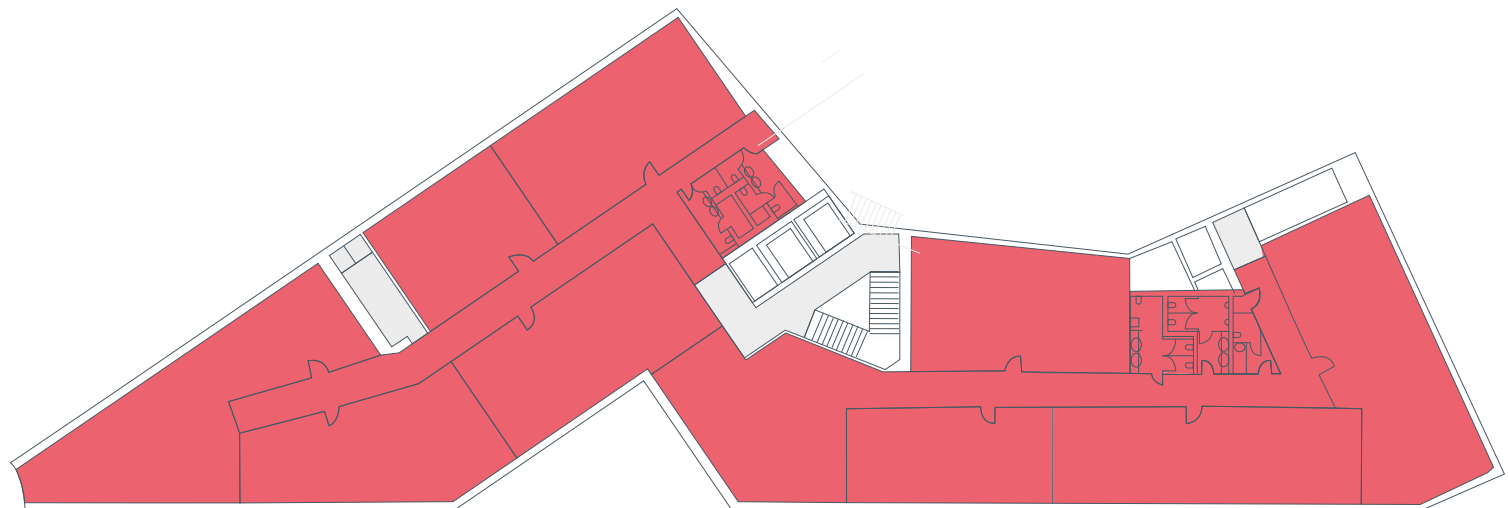
Typical floor plans

The available spaces range from 200 sq m
up to 980 sq m on each floor.



Ground Floor

- VERTICAL COMMUNICATION
COMMON AREA
- RETAIL AREA
- OFFICE AREA



1st - 5th Floor

*“Modern office building
in the heart of Prague
& Europe”*



Contact details

Pavel Kadera

Fund Manager

pkadera@redsidefunds.com

+420 222 500 757

+420 725 504 73

Jan Mathy

Asset Manager

jmathy@redsidefunds.com

+420 222 500 757

+420 608 467 464



www.redsidefunds.com

